

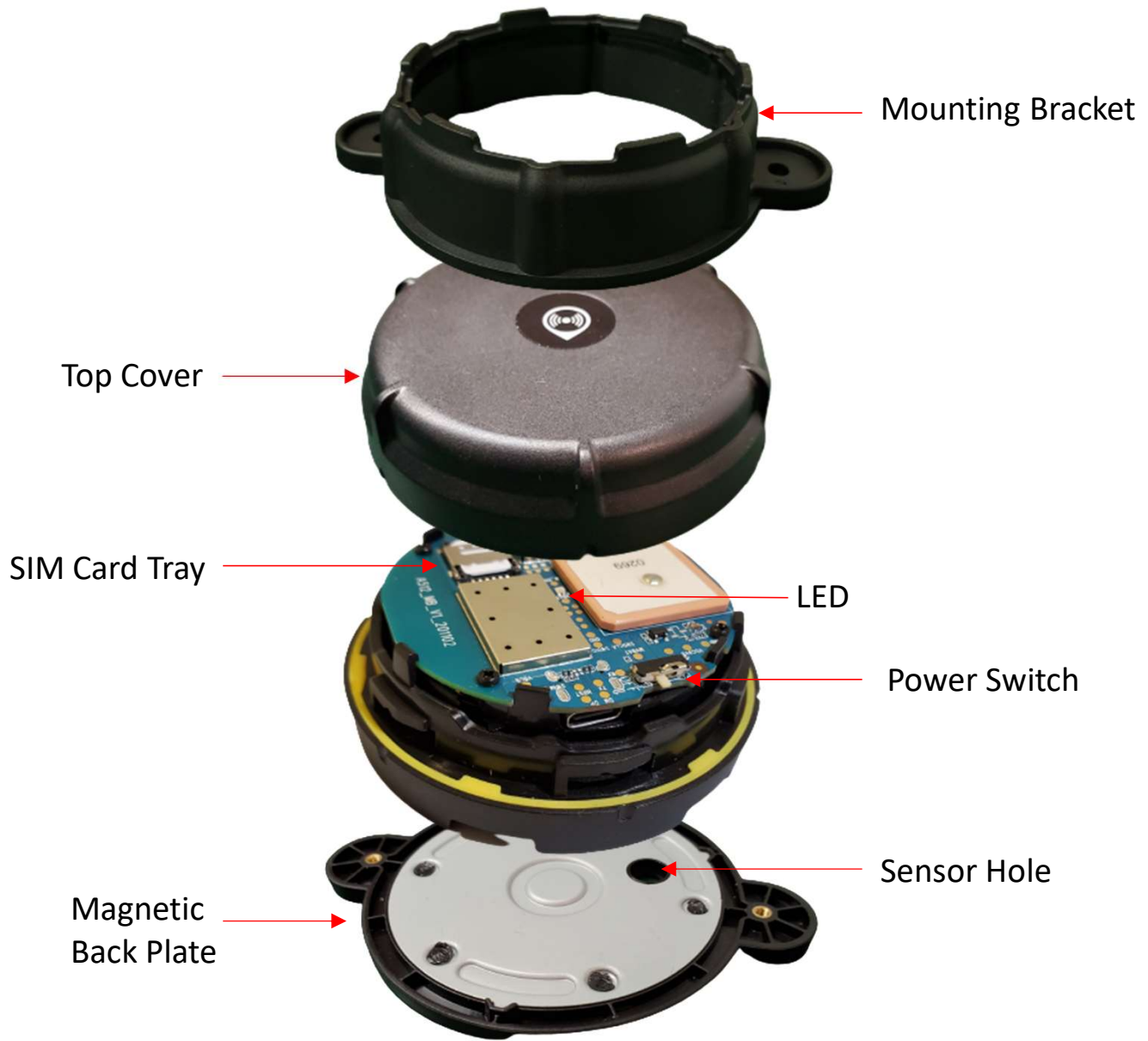
Micron Prime Pod Mini

Hardware Guide

Expanded View.....	2
Top/Bottom View.....	3
Quick Start Guide.....	4
SIM Card Installation.....	5
Battery Replacement.....	6,7



Expanded View



Top View



Bottom View





1

Open box and separate mounting bracket from device.



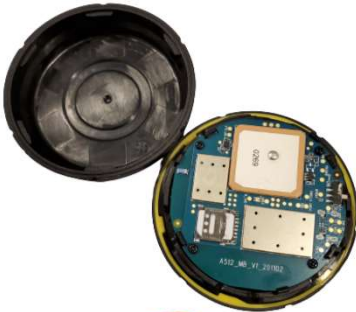
2

Connect top of bracket with the slots on the back of the device.



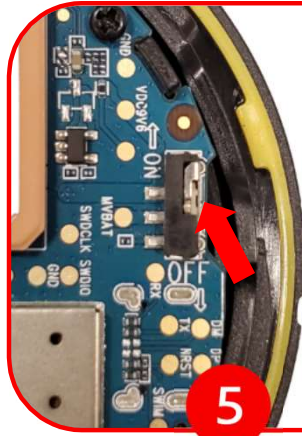
3

Twist the bracket counterclockwise to unlock the top cover.



4

Once unlocked, pull cover off device.



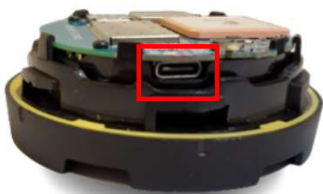
5

Locate the power switch on the side of the device and slide it to the "ON" position.



6

Wait for the LED light to turn on.



7

Use the USB C port located on the side of the device (under the ON/OFF switch) for programming device commands.



8

Put the cover back on the device.



9

Use the bracket (step 1) to twist the device clockwise to lock it.



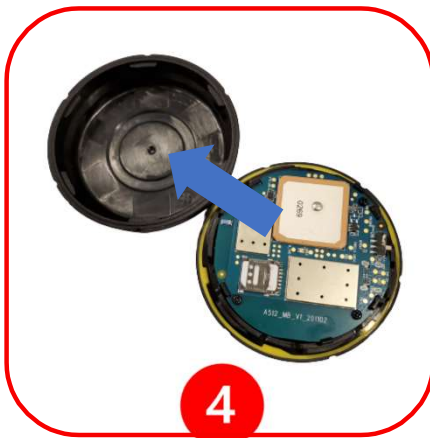
1
Open box and separate mounting bracket from device.



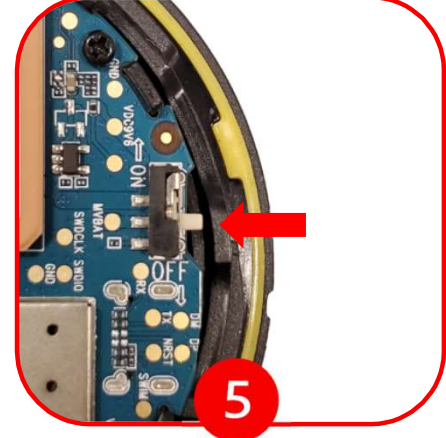
2
Connect top of bracket with the slots on the back of the device.



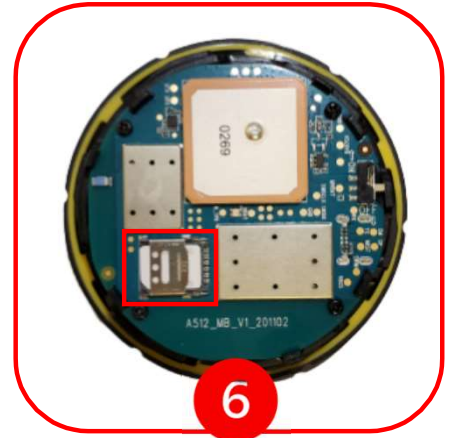
3
Twist the bracket counterclockwise to unlock the top cover.



4
Once unlocked, pull cover off device.



5
Locate the power switch on the side of the device and slide it to the "OFF" position.



6
Locate the SIM tray on the top of the device.



7
Slide tray cover to unlock, open and insert the new SIM card with the gold contacts facing down.



8
Close and lock the SIM card tray by sliding it forward, then turn on the device after installing new SIM card.



9
Use the bracket (step 1) to twist the device clockwise to lock it.

Battery Replacement Guide

Part 1



1

Connect top of the mounting bracket with the slots on the bottom of the device.



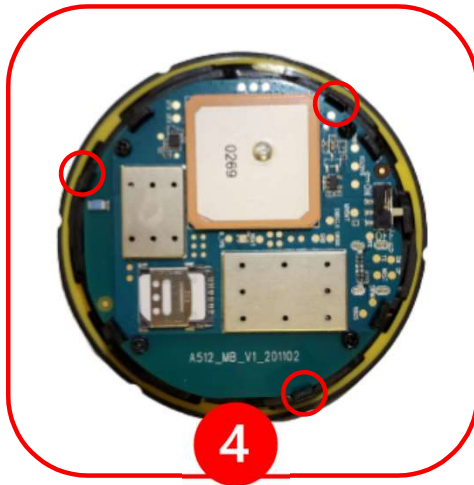
2

Twist counterclockwise to unlock the top cover.



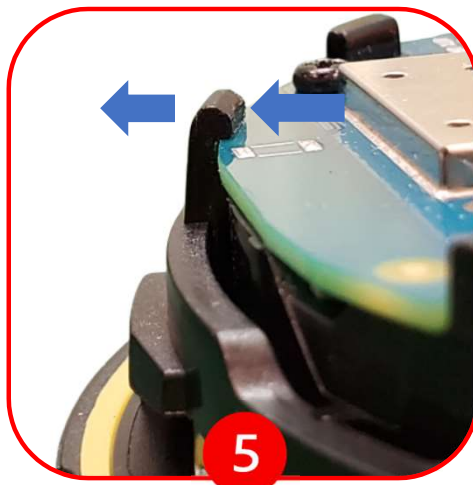
3

Once unlocked, pull cover off the device.



4

Locate three small clips holding unit in place.



5

Push clips out, releasing the device.



6

Pull component out of case.

Battery Replacement Guide Part 2



With the battery facing up, unplug and pull old battery out.



Connect new battery and put into device.



Align sensor hole on case with sensor hole next to battery, push component back into place.



Component should align with grooves on side of case, push in until all three clips (step 5) make a clicking sound.



Plug device into a computer using the USB C port and send battery replacement command (AT+GTRTO) via Micron MAP Utility program. Reset device after command acknowledged.



Put the cover back on device. Use the bracket (step 1) to twist device clockwise to lock it.