

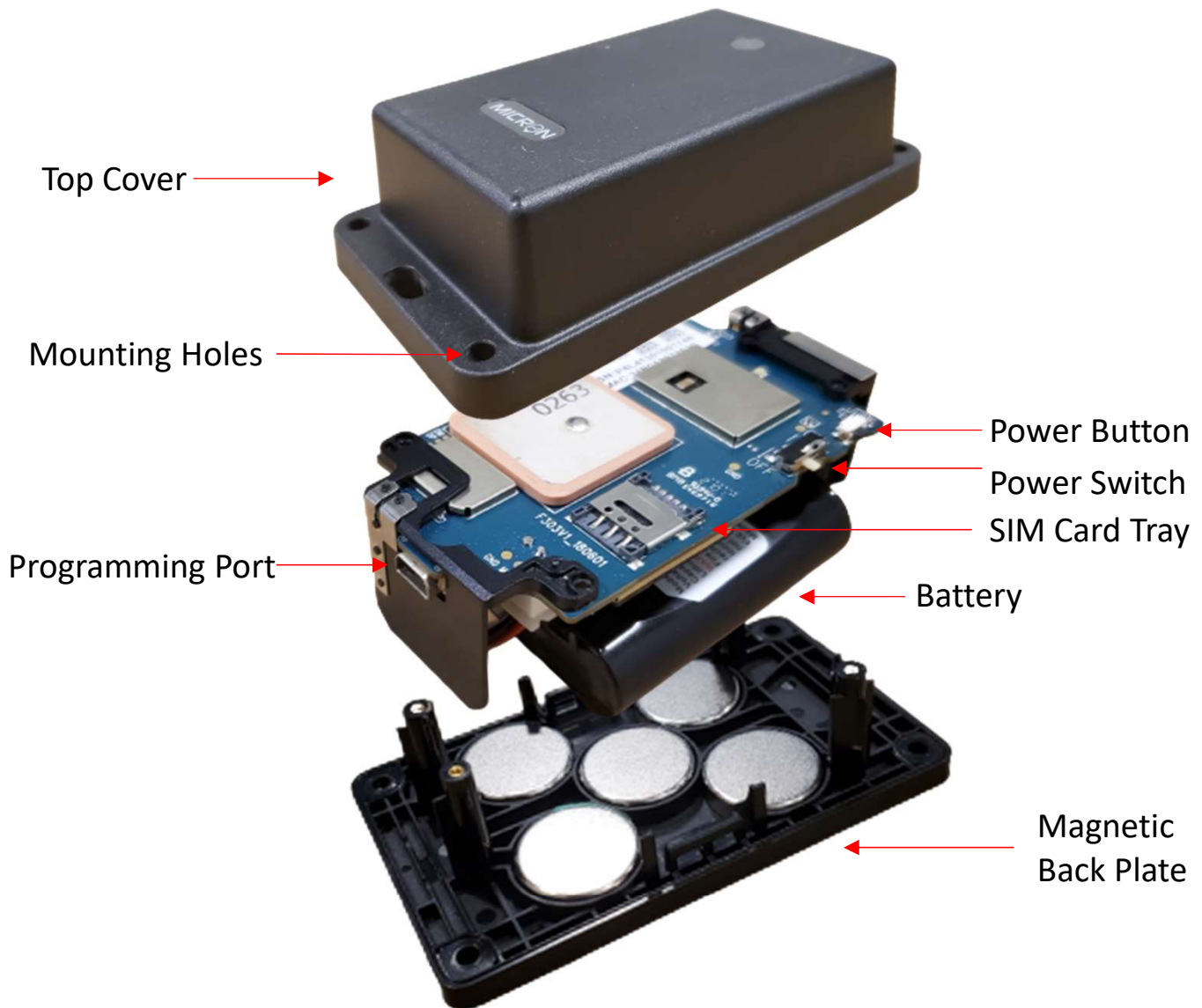
# Micron PRIME Bolt Mini

## Hardware Guide

Expanded View.....	2
Top/Bottom View.....	3
Quick Start Guide.....	4
SIM Card Installation.....	5
Battery Replacement.....	6,7



## Expanded View



Top View

LED Indicator



Bottom View

Mounting Holes





1

On the back of device find the small indents next to screw covers.



2

Use a tool to pry open the covers and set aside.



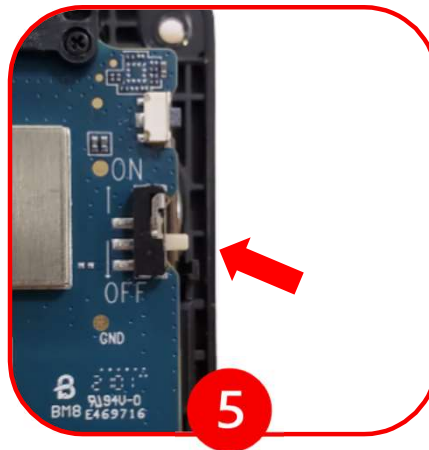
3

Unfasten the screws, then use extended lip to pry open.



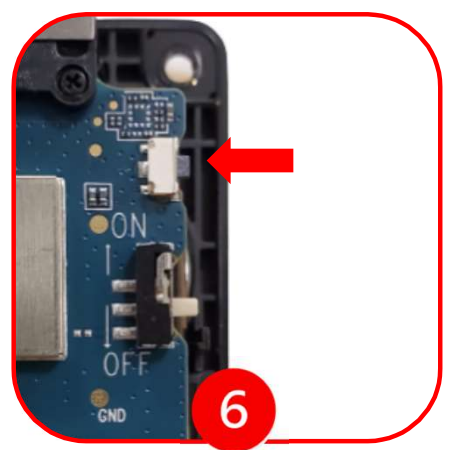
4

Once pried open, pull cover off device.



5

Locate the power switch on the side of the device and slide it to the "ON" position.



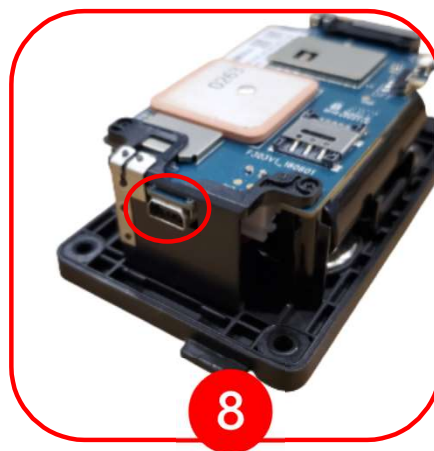
6

Push and hold the power button on top of power switch.



7

Hold button until the LED on device illuminates indicating the device as successfully powered on.



8

Use the port located on the side of the device for programming commands.



9

Put cover back on device, use screws to fasten device shut, and put screw covers back in place.



# SIM Card Installation Guide



1

On the back of the device find the small indents next to screw covers.



2

Use a tool to pry open the covers and set aside.



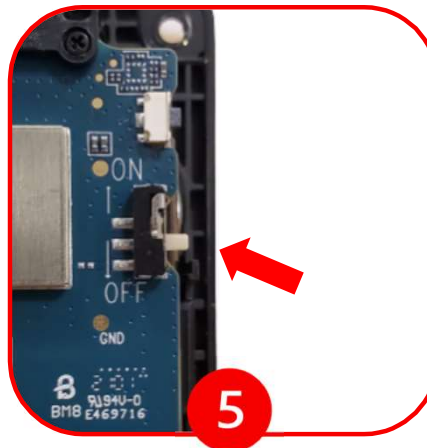
3

Unfasten the screws, then use extended lip to pry open.



4

Once pried open, pull cover off device.



5

Locate the power switch on the side of the device and slide it to the "OFF" position.



6

Locate the SIM tray on device board.



7

Slide tray cover to unlock, open and insert the new SIM card with the gold contacts facing down.



8

Close and lock the SIM card tray by sliding it forward, then turn on the device after installing new SIM card.



9

Put cover back on device, use screws to fasten device shut, and put screw covers back in place.

# Battery Replacement Guide

## Part 1



1  
On the back of the device find the small indents next to screw covers.



2  
Use a tool to pry open the covers and set aside.



3  
Unfasten the screws, then use extended lip to pry open.



4  
Once pried open, pull cover off device.



5  
Locate four small screws holding the PCB.



6  
Unfasten the small screws from device.



# Battery Replacement Guide Part 2



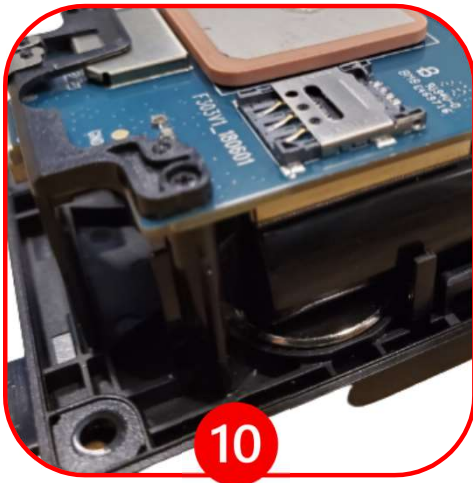
Pull component off from the magnetic backplate.



With the battery facing up, unplug and pull old battery out.



Connect new battery and place it back into device.



Component should align with magnetic backplate. Fasten the screws and turn the device on.



Plug device into a computer using the port and send battery replacement command (AT+GTRTO) via Micron MAP Utility program. Reset device after command acknowledged.



Put cover back on device, use screws to fasten device shut, and put screw covers back in place.